

Welcome Home



\$ 450,000

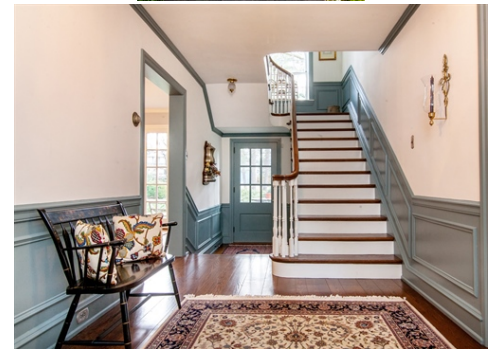


1408 Boyer Blvd, Norristown, PA 19401

[WEB: BoyerBlvd.com](http://www.BoyerBlvd.com)

- » **Beds:** 4 | **Baths:** 2 Full, 1 Half
- » Single Family | 4055 square feet | Lot: 0.72 acres
- » Beautiful Wissahickon Schist Stone Exterior
- » Random Width Peg Hardwood Floors
- » Gorgeous Palladium Windows
- » Updated Kitchen & Bathrooms
- » 8th Tallest American Elm in PA

QR Code



Gregory Parker
(610) 994-1147 (Direct)
(215) 641-2727 (Office)
greg.parker@coldwellbanker.com
<http://www.CallGregParker.com>



Coldwell Banker Preferred
686 Dekalb Pike
Blue Bell, PA 19422
(215) 641-2727

Only once in a great while does a home like this come on the market. Luxury, quality & charm abound in this stately 4 bedroom, 2.5 bath Colonial boasting over 4,000 square feet of living space nestled on a large private lot in a quiet neighborhood. Attributes of this wonderful home include beautiful Wissahickon Schist Stone exterior, slate roof, gorgeous palladium windows, beautiful random width peg hardwood floor, large rooms, 3 fireplaces (2 wood burning, 1 gas) and exquisite landscaping highlighted by the spectacular American Elm in the front yard, which is listed as the state's eighth tallest on the PA Big Tree Registry. Upon entering you will be captivated by the open foyer, stunning millwork, and turned staircase leading to the upper levels. Just off the foyer is the cozy wood paneled library with wood burning fireplace featuring unique Mercer tile of Doylestown. Living room features beautiful millwork including the beautiful hand crafted mantle on marble wood burning fireplace, crown molding, deep window sills, 6 inch baseboards and French doors to the delightful covered side porch. The dining room features lovely French doors to the flagstone patio and leads to the wonderful kitchen. The fabulous updated kitchen offers old world charm with modern conveniences including an inviting brick gas fireplace, beautiful bay window overlooking fantastic backyard, exposed beam ceiling, and beautiful custom

PA License AB067333.

©Properties Online, Inc. The above information including square footage is deemed reliable but has not been independently verified and cannot be guaranteed. Coldwell Banker® and the Coldwell

