

Too Late! Call for the Sold Price!



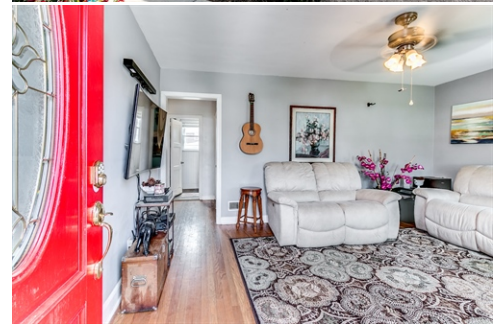
\$ 209,900

24 Mount Vernon Drive, Claymont, DE 19703

WEB: 24MountVernonDrive.com

- » Beds: 3 | Baths: 1 Full
- » MLS #: 7042545
- » Single Family | 1200 square feet | Lot: 0.17 acres
- » Quiet community of Rolling Hill overlooking the Delaware River
- » 1-car attached garage
- » Spectacular landscaping with pristine manicured gardens
- » Updated and upgraded kitchen with all the bells and whistles
- » Relaxing back yard deck

QR Code



The Ferreira Group

(609) 707-5124 (Cell)
(302) 426-6040 (Office)
brian@theferreiragroup.net

<http://www.theferreiragroup.net>



at Berkshire Hathaway
Home Services
Fox & Roach Realtors®

Fox & Roach Realtors
Powder Mill Square
3838 Kennett Pike
Greenville, DE 19807
(302) 571-8855

Welcome to Rolling Park! Hidden gem of a neighborhood has been well stewarded over the years, and boasts an incredible view you will have to see to believe. Driving up to the home take note of the well kept lawns and landscaping in the neighborhood, and make your way to the front door of this cared for cape. STUNNING stone exterior! Original hardwood floors will greet you upon entry, along with a spacious living room offering plenty of natural light. Hardwood floors extend into both bedrooms, bath on first floor is replete with stone tile. The Kitchen is HGTV material, with Bamboo lam flooring, custom cabinets, concrete countertops, large granite island countertops, newer appliances and custom shiplack as backsplash. Through the sliding glass doors of your new kitchen, you can see the huge back yard just beyond the newly painted deck. The deck offers a very generous space for entertaining or just relaxing and enjoying the incredible view you have at the property. The upstairs of the house is a world of its own. Skylights, newer flooring, exposed brick custom shelving, lots of space. Roof and windows are newer. The days of being able to buy in the Brandywine Area, at this price point, are all but gone. Come make this house your home.

