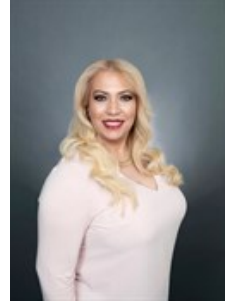


## Bradley Beach Portfolio for Sale



**\$ 10,980,000**



**Selling Renting OR Buying?**  
**Diane will Connect Qualified**  
**Buyers to Motivated Sellers**

(908) 688-3311 (Office)

[forsalebydianerivera@gmail.com](mailto:forsalebydianerivera@gmail.com)

<http://www.forsalebydianerivera.com>



Preferred Realty, Inc.

1915 Morris Avenue

Union, NJ 07083

(908) 688-3311

**708 Main Street , Bradley Beach, NJ 07720**

- » Income
- » Highly Trafficked Area
- » 4 blocks to train station
- » Positive Cash Flow
- » Upside potential
- » More Info: [bradleybeachportfoliosale.Listing.Site](http://bradleybeachportfoliosale.Listing.Site)



Various mixed use properties in good condition for sale on a highly trafficked area in Bradley Beach, NJ

Excellent upside potential and redevelopment opportunity with a vacant lot adjacent to Properties are all located steps to the NJ transit Train station for easy access.

Bradley Beach was not affected by Sandy and is in Monmouth County, New Jersey, United States. Bradley Beach was named after James A. Bradley, the developer responsible for the creation of the Bradley Beach and Asbury Park.

### Roads and highways

The borough had a total of 14.31 miles (23.03 km) of roadways, of which 10.90 miles (17.54 km) were maintained by the municipality, 2.56 miles (4.12 km) by Monmouth County and 0.85 miles (1.37 km) by the New Jersey Department of Transportation.

