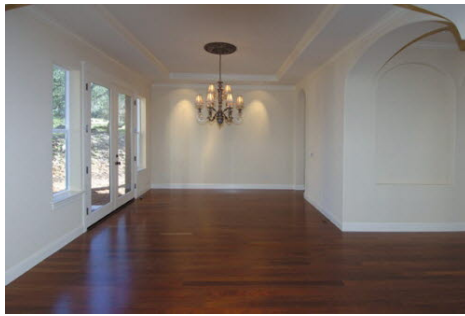


Welcome Home



Call for Price!

Santa Rosa, CA 95404

WEB: 555Main.KimAgent.com



Kim Agent

(800) 826-5123 (Kim)

info@propertiesonline.com

<http://www.kimagent.com>



Properties Online

1820 Empire Industrial Ct

Santa Rosa, CA 95403

(800) 826-5123

- » **Beds:** 2 | **Baths:** 1 Full, 1 Three-Quarter
- » Single Family | 1,376 ft² | Lot: 8,670 ft²
- » Amazing Views of the Valley
- » Huge Back Yard Professionally landscaped with pool
- » Wet Bar with marble countertops, wine rack, & wine cooler
- » Bonus Room For Kids Or Entertaining

QR Code



Remarkable new home with custom finishing details on a beautiful parcel with golf course park frontage along the prestigious area of Powder Horn Road. Spacious, deep parcel and privacy tree line afford protection from stray golf balls. Great opportunity to own an affordable, custom-styled home! Remarkable new home with custom finishing details on a beautiful parcel with golf course park frontage along the prestigious area of Powder Horn Road. Spacious, deep parcel and privacy tree line afford protection from stray golf balls. Great opportunity to own an affordable, custom-styled home!

