

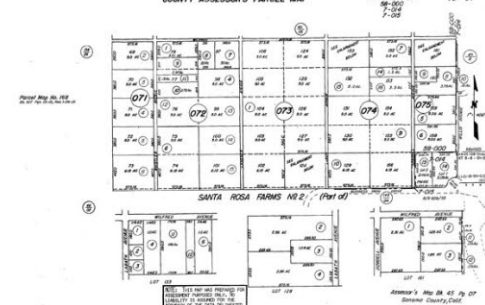
Commercial Land with Development Potential



\$ 5,999,000



COUNTY ASSESSOR'S PARCEL MAP TAX DATE AREA 45-07



0 Willis Avenue, Rohnert Park, CA 94928

WEB: 0WillisAve.C21NBA.com

- » **MLS #:** 21511185
- » Land | Lot: 5.2 acres
- » Level and easy to build 5.2+ commercial acres of three parcels near new casino and hotel
- » 380± feet of frontage with existing storm drain and city water and sewer access
- » Includes existing 3 bedroom home and two-story commercial storage building
- » High visibility location near future Amy's Kitchen Restaurant
- » Excellent area of commercial and retail development with Highway 101 access nearby

QR Code



Martin A. Levy
(707) 303-3333
(707) 303-3340 (fax)
Martin@MartinLevy.com
<http://www.MartinLevy.com>

CENTURY 21®
Alliance
1045 College Avenue
Santa Rosa, CA 95404
(707) 303-3333

Primed for future development in the neighborhood of the new mega casino and hotel, this 5.2+ acre parcel consisting of three parcels is replete with potential. Commercially zoned and level for easy building, this key land has 380± feet of frontage, storm drains in place and access to city water and sewer. An existing 3 bedroom home and a two-story commercial storage building is included. The property has high visibility near Amy's Kitchen restaurant and has easy on/off Highway 101 freeway access.

