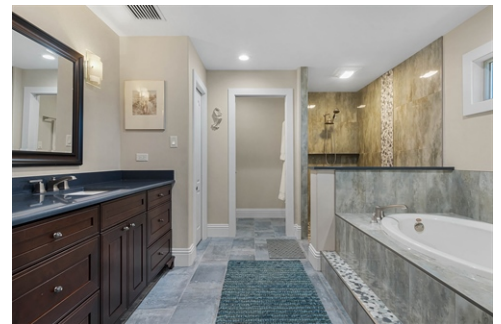




\$ 899,900



19101 Morgan Horse, Groveland, FL 34736

- » Beds: 3 | Baths: 2 Full
- » MLS #: G5055223
- » Single Family | 2,804 ft² | Lot: 5 acres
- » More Info: 19101MorganHorse.com



Dawn Giachetti Realtor
 (352) 874-2100 (cell)
 (407) 233-1288 (e-fax)
 DawnGiachetti@gmail.com
<http://www.dawngiachetti.com/>

Dawn
GIACHETTI
 REALTOR®

Premier Sotheby's International Realty
 1766 E Highway 50
 Clermont, FL 34711

5 ACRES with a gorgeous custom home with frontage on a pond - relax by the fire pit and enjoy a beverage while the sun sets across the water. Bring your horses and animals, plenty of room to roam here. What a wow factor this home has from the minute you enter the front door-the views through the home out to the property are awesome. Bamboo flooring throughout most of the home starts in the front formal living room and carries through to the massive great room. The vaulted ceiling and wall of French doors give this room an even more spacious feel. The dining area is so flexible, room for the largest of furniture here - buffets, hutches, even a table for a dozen or more. Gorgeous chandelier above the table. Right alongside the dining room is this magnificent kitchen, both in space and in quality! Huge slabs of stone for countertops, breakfast bar and the huge center island. Pendant lights over both the breakfast bar and island, along with the recessed lighting makes this incredibly bright and light. Custom cabinetry package has pullouts/drawers, crown molding, upgraded hardware - even under cabinet lighting. Tons of storage, plus a walk-in pantry. The tiled backsplash coordinates w/the countertops and floors and the contrast against the rich cabinetry is a perfect combination! Stainless steel appliances including built-in oven, gas cooktop and vented hood make any cooking, baking or entertaining a dream.

