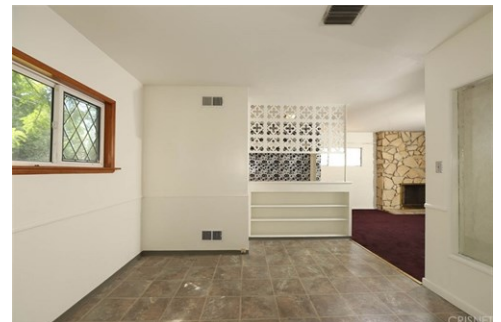


# Single Family Residence, Ranch - Chatsworth, CA



\$ 923,450



10646 Owensmouth Avenue, Chatsworth, CA 91311

- » Beds: 4 | Baths: 1 Full, 1 Half, 1 Three-Quarter
- » MLS #: SR22144875
- » Single Family | 1,864 ft<sup>2</sup> | Lot: 19,999 ft<sup>2</sup>
- » More Info: 10646Owensmouth.com



Anngel Benoun  
Randy Saunders  
(818) 521-4035  
(818) 645-8575  
Anngel4re@earthlink.net  
<http://Anngelbenoun.com>

Dilbeck Real Estate  
17279 Ventura Boulevard  
Encino, CA 91316  
(818) 728-2200

**Probate, Subject to Court Confirmation. Accepted offer is \$879,000. MINIMUM OVERBID WILL BE \$923,450 on Friday 9/16/22 at 8:30 a.m. in LA Superior Court, Dept. 4 located at 111 N. Hill Street, Los Angeles 90012.**

Chatsworth mini-ranch on almost a half acre of land! This single story home is located on a flat lot in one of Chatsworth's most desired locations. Gated, with a circular driveway and privacy hedge, this home welcomes with endless possibilities. A tiled entry opens to a large living room with fireplace, overlooking a covered patio. The large kitchen with ample cabinetry is fully open to the spacious dining area. Beyond this, there is a guest bedroom and 3/4 bath. The generously sized family room enjoys a second fireplace and more patio views. A hallway leads to three additional bedrooms and two bathrooms. Rear bedrooms look out upon the welcoming, endless yard. The yard, zoned for horses, includes fruit trees and shed. Home needs updating and has tremendous potential for creating a true Chatsworth estate. Close to Sierra Canyon schools and Stoney Point Park, with easy access to freeways, hiking and shopping.

