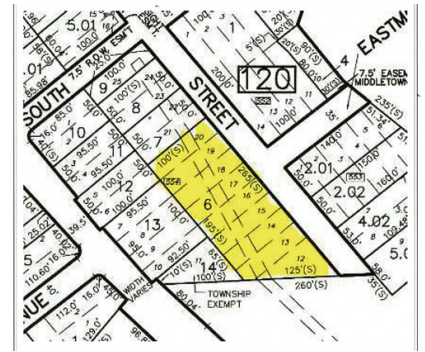
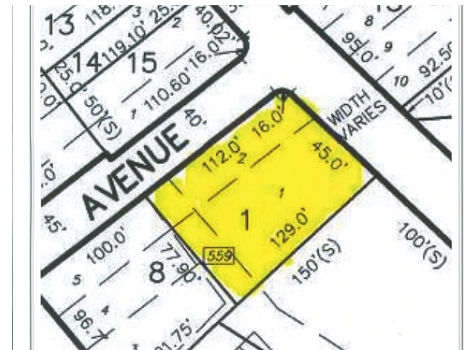


LAND OPPORTUNITIES



Land Opportunity, New Jersey, NJ 07748

- » Land
- » These Opportunities are Ideal for Experienced Investors.
- » Preference Will Be Given to Offers without Contingencies.
- » Sellers are Open to "Package Deal" Offers for More than One Lot.
- » More Info: LotInformation.com



The Brian Church Group
732-449-0671 Direct

(732) 272-4072 (Cell)
(888) 422-0218 (Fax)
(732) 449-3200 (Office)
bcgsold@gmail.com
<http://www.brianchurchgroup.com>

**BERKSHIRE
HATHAWAY**
HOMESERVICES
**FOX & ROACH,
REALTORS®**

Berkshire Hathaway HomeServices Fox & Roach
1101 3rd Ave
Spring Lake, NJ 07762
(732) 449-0671



Clinton Street, North Middletown - \$99,000 - (BLOCK 122 LOT 6) - Oversized 1.2-acre property in a convenient section of North Middletown. Close to Henry Hudson Trail Park and Pews Creek. Irregular lot dimensions are 267 ft across the front, 124ft and 100ft on each side, and 194ft across the rear. At first glance, this one may appear to have sub-division possibilities; but you must solve the Hurricane Preparation Easement which cuts diagonally across the property. This lot is in a FEMA AE Zone in an area of mostly single-family homes. It is part of an Estate, so we do not have a Survey.

Corner of South End & Bray, Middletown - \$69,000 - BLOCK 169 LOT 1) - Conforming lot in a super convenient area - near commuting, the beach & ferry. This is irregular with 61 feet on Bray, 129 and 112 along the sides and 77.9 across the rear. The town requires 6000sf for a corner lot and this is 8369sf. This is part of an Estate and we have no additional information or Survey.

