

ICONIC BEAUTY - SOUTH WRIGLEY - SOLD



\$ 1,025,000



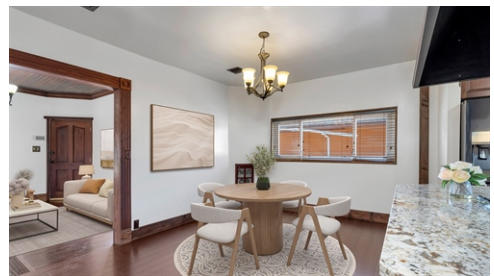
2130 Oregon Ave, Long Beach, CA 90806

- » Beds: 3 | Baths: 4 Full
- » MLS #: PW25131749
- » Single Family | 1,650 ft² | Lot: 6,800 ft²
- » Gourmet Island-Style Kitchen with Cherrywood Cabinets and Granite Counters
- » Three Bedroom and Three Baths in Main House w/tons of storage
- » More Info: 21300regonAve.com



Jeff Loftus
 Realtor, MBA
 (562) 397-6778 (Mobile)
 JeffLoftus@kw.com
 www.JeffLoftus.com

kw
 KELLERWILLIAMS.
 Keller Williams Coastal Properties
 6621 E. Pacific Coast Highway, Ste. 150
 Long Beach, CA 90803
 (562) 961-1400



HUGE PRICE IMPROVEMENT - Enjoy the unique and charming blend of this transitional California Craftsman that Victoria influences make this home really special and a true standout in your community. The many modern upgrades, wrap-around porch, large overhanging eaves, high-pitched roofs, yet simple in design, along with the ever-versatile Studio/Office/Storage space attached to rear of garage & the massive 504 square foot (not included in total SF) Serene Garden Sun Room Oasis, just screams, this is the home you've been waiting for, and you'll fall in love with the attractive curb appeal and pride of Ownership it exudes.

